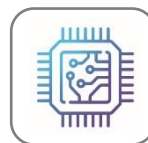


# RE2540-BLR



Low pressure grade RO element for brackish water

- Low-Energy Consumption
- High Permeate Flow and High Rejection



Semiconductor



Industrial



Municipal

## SPECIFICATIONS

### General Features

<b>Permeate Flow Rate</b>	740 GPD (2.8 m <sup>3</sup> /day)
<b>Nominal Salt Rejection</b>	99.4% (Minimum 99.0%)
<b>Effective Membrane Area</b>	27ft <sup>2</sup> (2.5 m <sup>2</sup> )
<b>Membrane Type</b>	Thin-Film Composite
<b>Membrane Material</b>	Polyamide (PA)
<b>Element Configuration</b>	Spiral-Wound, FRP Wrapping

**Test Conditions:** 1,500 mg/L NaCl solution at 150 psig (1.03 MPa) applied pressure; 15% recovery; 77°F (25°C); pH 6.5–7.0; Permeate flow rate for each element may vary but will be no more than -5%.

### Dimensions and Weight

Model Name	A	B	C	D/E	Part Number	
					Inter-Connector	Brine Seal
RE2540-BLR	40.0 inch (1,016 mm)	2.4 inch (60.8 mm)	0.75 inch (19.1 mm)	1.05 inch (26.7 mm)	SWA01050	SWA01047



1. Each membrane element supplied with one interconnector (coupler) and four O-rings.
2. All RE2540 elements fit nominal 2.5 inch (63.5 mm) I.D. pressure vessels.

### Toray Advanced Materials Korea Inc.

For more information on our products, company and regional contacts, please visit our website at [www.csmfilter.com](http://www.csmfilter.com).  
Product Specification Sheet / Model RE2540-BLR



# RE2540-BLR



Low pressure grade RO element for brackish water

## APPLICATION DATA

### Operating Limits

Max. Pressure Drop / Element	15 psi (0.10 MPa)
Max. Pressure Drop / 240" Vessel	60 psi (0.41 MPa)
Max. Operating Pressure	600 psi (4.14 MPa)
Max. Feed Flow Rate	6 gpm (1.36 m <sup>3</sup> /hr)
Min. Concentrate Flow Rate	1 gpm (0.23 m <sup>3</sup> /hr)
Max. Operating Temperature	113°F (45°C)
Operating pH Range	2.0 – 11.0
CIP pH Range	1.0 – 13.0
Max. Turbidity	1.0 NTU
Max. SDI (15 min)	5.0
Max. Chlorine Concentration	< 0.1 mg/L

## GENERAL HANDLING PROCEDURES

- Elements contained in the boxes must be kept dry at room temperature (7–32°C; 40–95°F) and should not be stored in direct sunlight.
- For WET-TYPE, the preservative solution (1% sodium metabisulfite solution) is added to prohibit the growth of micro-organisms.
- Permeate from the first hour of operation should be discarded.
- Salt rejection would be stabilized within 48 hours of continuous operation depending on feedwater and operating conditions, but may take over a week for dry elements.
- Keep elements moist at all times after initial wetting.
- Avoid excessive pressure and flow spikes.
- Only use chemicals compatible with the membrane elements and components. Use of such chemicals may void the element limited warranty.
- Permeate pressure must always be equal or less than the feed/concentrate pressure. Damage caused by permeate back pressure voids the element limited warranty.
- The element shell is FRP(Fiber Reinforced Plastic). Be aware of glass fiber strands and use safety equipment.

### Toray Advanced Materials Korea Inc.

For more information on our products, company and regional contacts, please visit our website  
Product Specification Sheet / Model RE2540-BLR



PT Watermart Perkasa  
Email: sales@water.co.id Phone: +62-21-316-1671  
Whatsapp (text only): +62815-8609-3500  
Website: www.water.co.id